

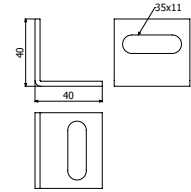


BBSL

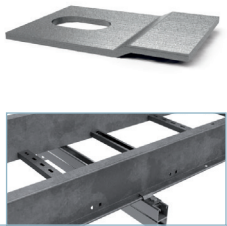


	GC		i304		i316	
	REF.	kg/ud	REF.	kg/ud	REF.	kg/ud
BBSL 10	2/0855	0,08	2/18591	0,08	2/11311	0,08

SP/SPD --> DIN933 M10X30 (0/0320 - i304 // 2/17600-i316) + TM41 M10 (2/17584 - GC // 2/17612-i316) + DIN125 M10 (2/17542-i304)

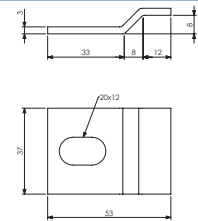


BBSLR



	GC		i304		i316	
	REF.	kg/udd	REF.	kg/ud	REF.	kg/ud
BBSLR 12	2/10267	0,04	2/18575	0,04	2/18592	0,04

SP/SPD --> DIN933 M10X30 (2/17547 - i304) + TM41 M10 (2/17584 - GC)



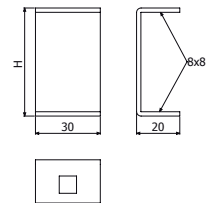
PVTBSL-E60



	Pap Nm	H		i304	
		mm	inch	REF.	kg/ud
		PVTBSL-E60	6	60	2 3/8"

PVTBSL-E60 + 2/100 x B1 (2/4925) -->

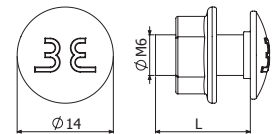
4 x PVTBSL-E60 --> 1 x TCCBSL / TCXBSL



B1



	L mm	Pap Nm	GC		i304	
			REF.	kg/ud	REF.	kg/ud
B1-100	14	6	2/6826	0,80	-	-
B1-100	20	6	-	-	2/4925	0,79



B3



	GC		i304		i316	
	REF.	kg/ud	REF.	kg/ud	REF.	kg/ud
B3-50	2/8827	1,95	2/12096	1,80	2/15575	1,80

